



User Guide ELB1101T



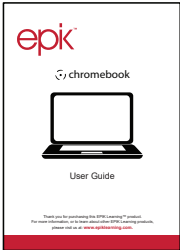
Thank you for purchasing this TEQNIO™ Chromebook.
For more information, or to learn about other EPIK Learning Company products,
please visit us at: www.epiklearning.com.

Important

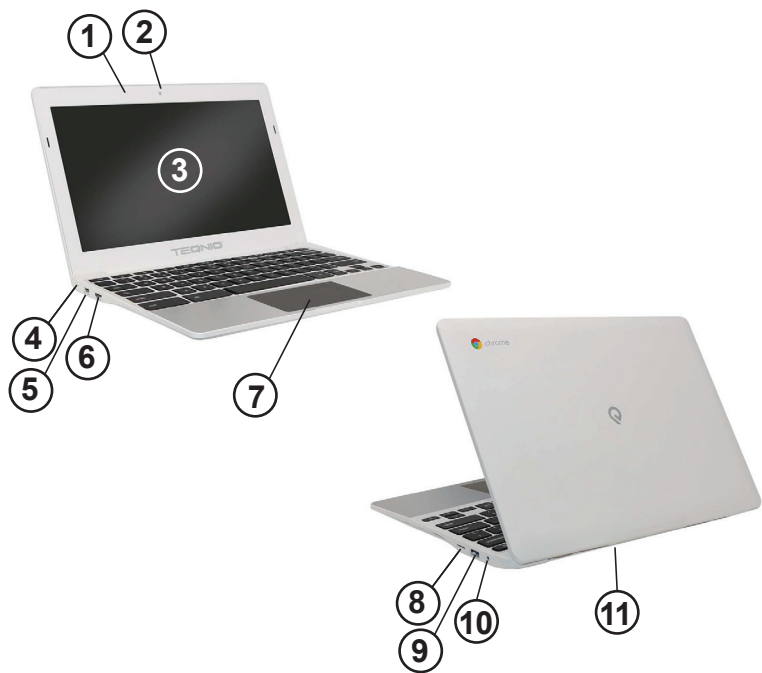
- The **Tegnio™** Chromebook is a high-density electronic product. DO NOT attempt to disassemble the device.
- Please do not drop or bang the device.
- Avoid using this product in the following environments: Extremely hot or cold places, high humidity, dusty areas, direct sunlight or long-term exposure to the sun.
- The product may be cleaned with a damp cotton cloth; the use of any chemical cleaning fluid is prohibited. Please keep the product away from water at all times.
- If you use headphones, DO NOT use them while crossing the street, riding a bicycle or driving a motorcycle.
- Please use approved battery, battery charger and accessories only. The use of any other type of products would be a breach of warranty and may be dangerous.
- If you have any questions regarding the use of this product, please contact your local dealer or contact the Epik Learning customer service center directly at support@epiklearning.com or call (888) 999-1244.
- Epik Learning will not be held responsible for any files lost due to product damage, repair or other causes. Please be sure to follow instructions in the User Guide and backup your files in a timely manner.

Package Contents

Carefully open your **Tegnio™** Chromebook box and take out the items listed below . If any of the items are missing or damaged, please contact your dealer immediately:

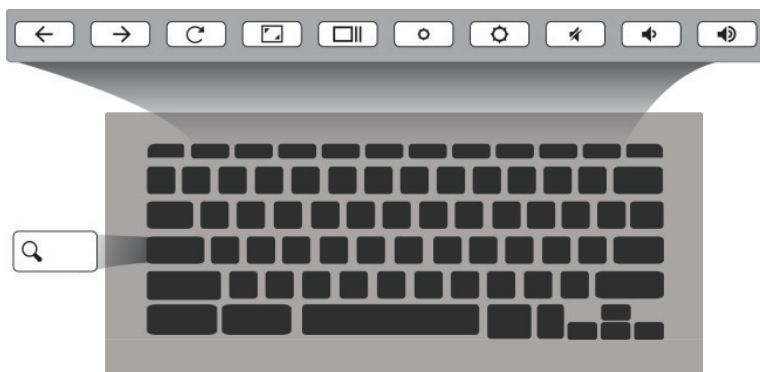
<ul style="list-style-type: none">• 1 Chromebook 	<ul style="list-style-type: none">• 1 AC adapter 
<ul style="list-style-type: none">• 1 Quick Guide 	

Layout



No	Name	No	Name
1	Microphone	7	Touchpad
2	Webcam	8	Micro SD Card Slot
3	LCD Display	9	USB 2.0 Port
4	DC Input Jack	10	3.5mm phone jack
5	USB 2.0 Port	11	Speakers (Under the Keyboard)
6	HDMI Port		

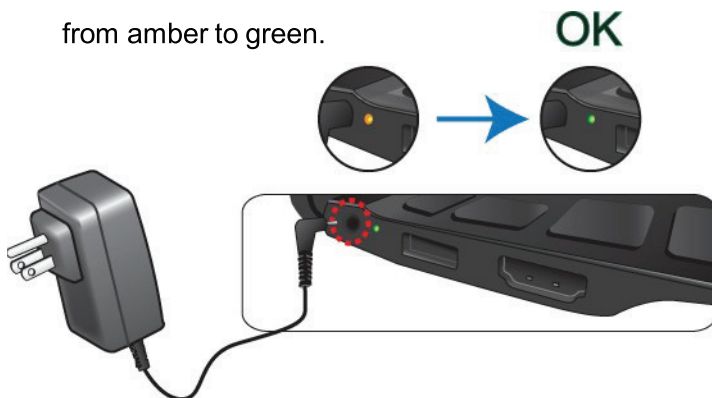
Function Keys



Icon	Description	Icon	Description
←	Previous Page	⚙️	Increase Screen Brightness
→	Next Page	🔇	Mute
↻	Reload Current Page	🔊	Decrease Volume
🗑️	Full-Screen Mode	🔊	Increase Volume
🖥️	Switch to Next Window	🔍	Search
⚙️	Decrease Screen Brightness		

Before Powering On for the First Time

- Charge the battery with the adapter included with your Chromebook until the charging indicator turns from amber to green.



- Make sure there is a wireless network available for you to connect your Chromebook.

Note: If the only available network is a wired network, you need a separate USB internet adapter that supports Linux systems.

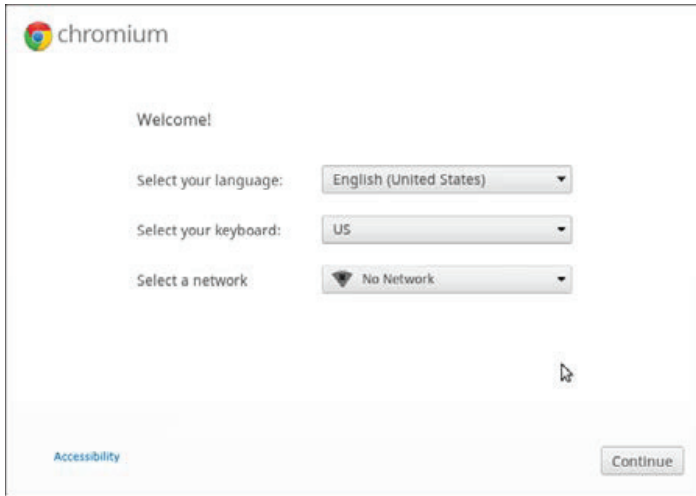
Getting Started

Step1: Turning your Chromebook On for the first time



Press the Power button.

A dialog will appear as shown below.



Step.2: Select your language settings

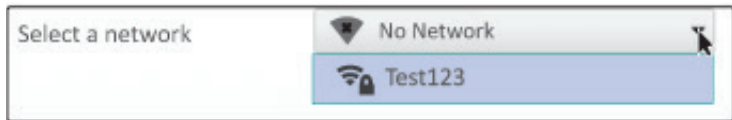
If there is more than one way to type in your language,

Getting Started (Cont'd)

you may be prompted to select a keyboard input method as well.

Step3: Connect to a network

Select a wireless network from the "Select a network" list to connect to the Internet.



If your selected network is a protected one, you will be prompted to enter your password.

Step 4: Accept the Terms of Service

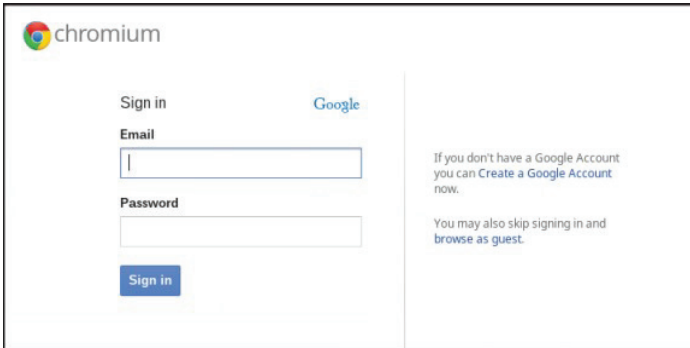
Once connected to a network and accept the Terms of Service, your Chromebook will automatically download any available system updates to get the latest Chrome OS features.

Getting Started (Cont'd)

Step 5: Create your Google Account

Note: The first account signed in here will be set as the owner account and is the only account that will be allowed to change Chrome settings.

When you reach this step, the dialog shown below will appear on your screen.

A screenshot of the Chromium sign-in dialog. The dialog has a light blue header with the Chromium logo and name. Below the header, there is a 'Sign in' label and a 'Google' link. Under 'Sign in', there are two input fields: 'Email' and 'Password'. Below the 'Password' field is a blue 'Sign in' button. To the right of the input fields, there is a vertical line. To the right of the line, there is text that says 'If you don't have a Google Account you can [Create a Google Account](#) now.' and 'You may also skip signing in and [browse as guest](#).'

If you already have a Google Account, enter your username and password in the sign-in box and click on the Sign-in button.

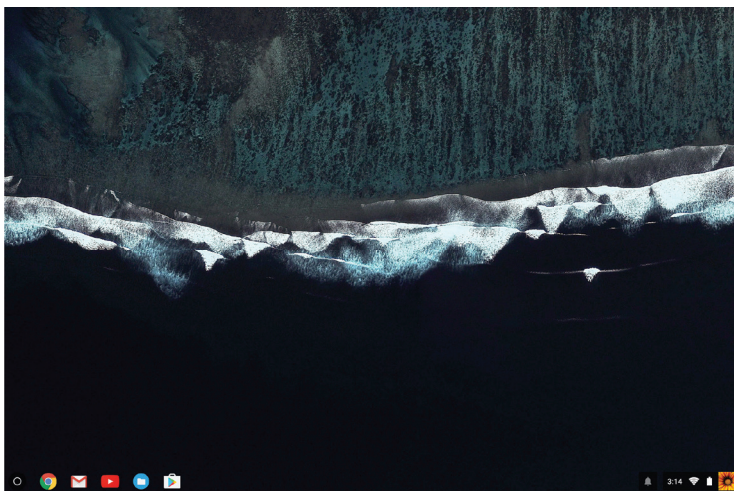
If you don't have one, click “[Create a Google Account](#)” on the right to set up a new account.

Getting Started (Cont'd)

Step 6: Set your account picture

You can use the Chromebook's built-in webcam to take a photo of yourself, or just choose an icon instead and change it later.

Once your Google account is completed, the desktop will be open (as shown below) and you can begin using your new **Teqnio™** Chromebook.



Specifications

Processor	<ul style="list-style-type: none">● Rockchip RK3288 Cortex-A17 Quad Core
Memory	<ul style="list-style-type: none">● DDR3L SDRAM● 4G 1600MHz
Storage	<ul style="list-style-type: none">● eMMC for V5.0● 32G
Wireless	<ul style="list-style-type: none">● IEEE 802.11 2 X 2 MIMO a/b/g/n/ac Wireless LAN + Bluetooth + NFC NGFF Module
Display	<ul style="list-style-type: none">● EDP 1366x768 TN● 11.6" for EDP interface
Webcam	<ul style="list-style-type: none">● 720p HDTV and 1.3M
Battery	<ul style="list-style-type: none">● Polymer Battery● 2S1P, 7.4V● >25Wh
Input/Output	<ul style="list-style-type: none">● 1 x 12V DC IN● 1 x 3.6mm Combo Jack● 1 x HDMI (A-TYPE)● 2x USB2.0 Port● 1xTF slot (Micro SD)
Speaker & Mic	2 x Built-in Speakers (Stereo) 1 x Internal MIC
AC Adapter	DC Output: 12V/2A Input Voltage: 100 - 240VAC Input Frequency: 50 - 60Hz
Dimension (mm)	204 (W) x 290 (D) x 19.3 (H)
Weight	< 1,150g (w/o Adapter)

Notes

Putting your Chromebook in the “Sleep” mode

You can also put your Chromebook to sleep by closing the lid. If you're not signed in, your Chromebook turns off. Under plugged in, the screen turns off automatically when it has been inactive for 8 minutes.

Chromebook also turns into sleep mode after 30 minutes of inactivity. When you are ready to “wake it up” back, simply press any key on the touchpad.

Federal Communications Commission (FCC) Statement

This equipment has been tested and found to comply with the limits for a Class B digital device, pursuant to Part 15 of the FCC Rules. These limits are designed to provide reasonable protection against harmful interference in a residential installation. This equipment generates, uses, and can radiate radio frequency energy and, if not installed and used in accordance with the instructions, may cause harmful interference to radio communications. However, there is no guarantee the interference will not occur in a particular installation. If this equipment does cause harmful interference to radio or television reception, which can be determined by turning the equipment off and on, the user is encouraged to try to correct the interference by one or more of the following measures:

- Reorient or relocate the receiving antenna.
- Increase the separation between the equipment and receiver.
- Connect the equipment into an outlet on a circuit different from that to which the receiver is connected.
- Consult an authorized dealer or service representative for help.

Properly shielded and grounded cables and connectors must be used in order to meet FCC emission limits. Proper cables and connectors are available from ESI authorized dealers. ESI is not responsible for any radio or television interference caused by using other than recommended cables or connectors or by unauthorized changes or modifications to this equipment. Unauthorized changes or modifications could void the user's authority to operate the equipment.



This device complies with Part 15 of the FCC Rules. Operation is subject to the following two conditions: (1) this device may not cause harmful interference, and (2) this device must accept any interference received, including interference that may cause undesired operation.

- Industry Canada Class B Emission Compliance Statement
This Class B digital apparatus complies with Canadian ICES-003.
- Avis de conformité à la réglementation d'Industrie Canada
Cet appareil numérique de la classe B est conforme à la norme NMB-003 du Canada.

Specifications

No.	Item	Spec.	Note
1	Charge Voltage	8.4 V	
2	Nominal Voltage	7.4 V	Cell Voltage between 7.7 V~ 7.9 V before shipping. (The electricity should be around 60%-70% before shipment)
3	Nominal Capacity	3500 mAh with 0.2 C Discharge	Nominal Capacity refer to the capacity of 0.2 C discharge with 6.0 V cut-off,after charging with standard method.
4	Min Capacity	3400 mAh with 0.2 C Discharge	Min Capacity refer to the capacity of 0.2 C discharge with 6.0 V cut-off,after charging with standard method.
5	Standard Charge method	0.2 C charging	0.2 C CC charge to 8.4 V ,then CV charge till charge decline to $\leq 0.02C$
6	Charging time	6 hours reference	Base on standard charge method
7	Max charge current	2 A	To continue to charging
8	Max discharge current	1 C	To continue to discharging
9	Discharge protel Volatge	2.8 V	While continue discharging the PCM protel
10	Discharge cut-end voltage	6.0 V	Capacity test discharg to the voltage
11	Self-discharge	Residual capacity > 85 %	After standard charging, storied at 25°C \pm 5°C for 28 days, then measure the capacity as Item 3.
12	Cycle life	> 500 Times	One cycle include one charging period and one discharging period.Test condition: Charge:0.2C to 8.4 V Discharge: 0.2C to 6.0 V The cycle life is the cycle times when the dis-charge capacity is about 80% of the standard capacity.
13	Impedance	< 250 m Ω	After Standard charging, measure the internal resistance with AC1KHz (while measuring,clip near 2/3 place of the anode and the cathode).

Specifications (Cont'd) / Warnings

14	Operating Temperature	Discharge: -20°C~55°C Charge: 0°C~45°C	Battery must be stored at 8 V~ 8.2 V. Long storage periods cells should be cycled every 90 days. The method is to do a charge-discharge cycle with standard method, then charge to 8 V~ 8.2 V.
15	Battery weight	approx 150 g	The weight only as a reference

WARNINGS:

- Keep the battery away from baby.
- Don't get into a microwave or high pressure container.
- Don't use a leaked battery nearby fire.
- Don't use an abnormal battery, such as leakage, swelling, deformation, etc.

Proper disposal



Do not throw your Notebook PC in municipal waste. This product has been designed to enable proper reuse of parts and recycling. The symbol of the crossed out wheeled bin indicates that the product (electrical, electronic equipment and mercurycontaining button cell battery) should not be placed in municipal waste. Check local regulations for disposal of electronic products.



Do not throw the battery in municipal waste. The symbol of the crossed out wheeled bin indicates that the battery should not be placed in municipal waste.



EPIK Learning Company

California - USA

www.epiklearning.com